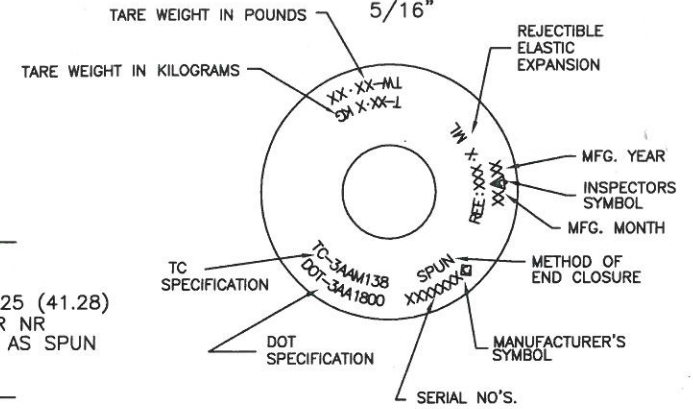


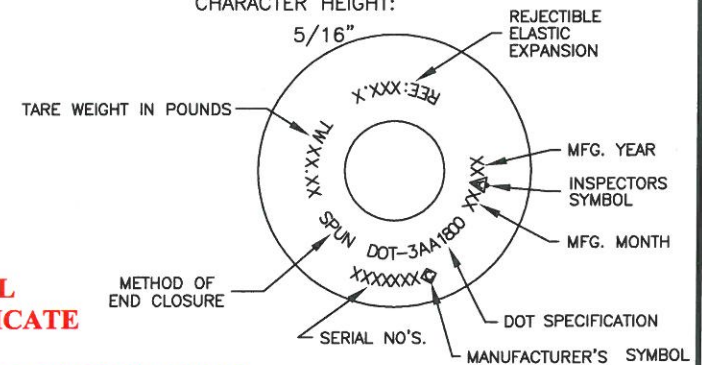
DOT/TC STAMPING LAYOUT

(NOT TO SCALE)
CHARACTER HEIGHT:
5/16"



DOT STAMPING LAYOUT

(NOT TO SCALE)
CHARACTER HEIGHT:
5/16"



SPECIFICATION	DOT-3AA	TC-3AAM
WEIGHT	27 LBS NOM	12.2 KG NOM
VOLUME	500 CU IN NOM	8.1 L NOM
SERVICE PRESSURE	1,800 PSIG	138 BAR
TEST PRESSURE	3,000 PSIG	20.68 MPA

- MATERIAL: A519 4130
- INTERNAL CLEANING: ALKALINE-STEAM-NITROGEN PURGE
- EXTERNAL FINISH: SHOTBLAST
PAINT PER WORK ORDER
- PACKAGING: PLUG INLET WITH 3/4" NPT PLUG (5743)
RUBBER BAND / PALLETIZE / STRETCH WRAP

NOTES:

1. NECKRING - IF SPECIFIED ON WORK ORDER, 3 1/8-11 NS CAP THREAD X 1 5/8 BORE X 1 7/8 HEIGH, UNEMBOSSED NECKRING PART NUMBER, (4004).
2. CAP - IF SPECIFIED ON WORK ORDER, 3 1/8-11 NS THREAD PART NUMBER, (820-0001F).

**CONFIDENTIAL
DO NOT DUPLICATE**

**NON-CONTROLLED DOCUMENT
QA/PC DEPARTMENT
REFERENCE ONLY**

1	ADD TC FORMAT	DLH	1/6/11
REV	DESCRIPTION	BY	DATE
UNITS INCHES (mm)		HUNTSVILLE FACILITY 521 GREEN COVE ROAD HUNTSVILLE, AL 35893 USA	
TOLERANCES (EXCEPT NOTED)		TITLE 10 LB CO2 SPUN (BILLET TUBE) CYLINDER	
DRWN. D. HARRIS	DECIMAL ± .01	DATE 11/3/10	DRAWING NUMBER 2740718-55
CHKD. <i>[Signature]</i> 1/6/11	ANGULAR ± 1 DEG	SCALE NONE	
APPD. <i>[Signature]</i> 1/6/11			