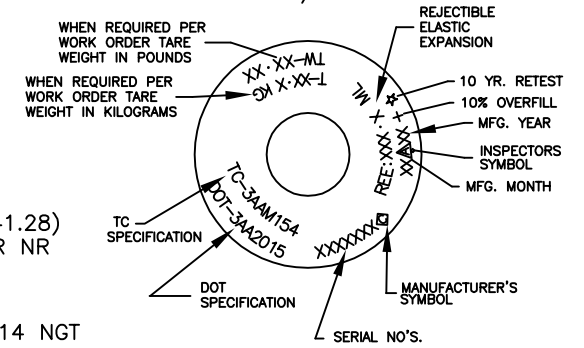
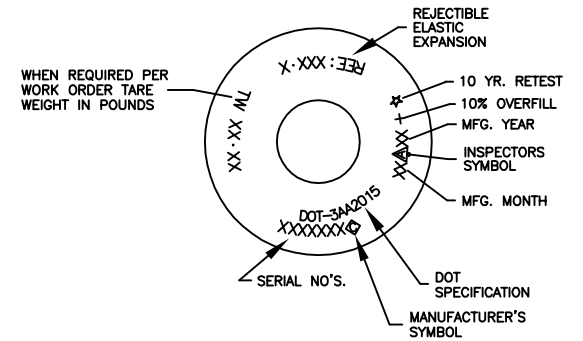


DOT/TC STAMPING LAYOUT
(NOT TO SCALE)
CHARACTER HEIGHT:
5/16"



DOT STAMPING LAYOUT
(NOT TO SCALE)
CHARACTER HEIGHT:
5/16"



SPECIFICATION	DOT3AA	TC3AAM
WEIGHT	67.5 LBS NOM	30.61 Kg NOM
VOLUME	1,650 CU IN NOM	27.04 L NOM
SERVICE PRESSURE	2,015 PSIG	154 BARS
TEST PRESSURE	3,360 PSIG	23.16 MP _a

- MATERIAL: A519 4130
- INTERNAL CLEANING: ALKALINE-STEAM-NITROGEN PURGE
- EXTERNAL FINISH: SHOTBLAST
PAINT PER WORK ORDER
- PACKAGING: PLUG INLET WITH 3/4" NPT PLUG (5743)
RUBBER BAND / PALLETIZE / STRETCH WRAP

NOTES:

1. NECKRING - IF SPECIFIED ON WORK ORDER, 3 1/8-11 NS CAP THREAD X 1 5/8 BORE X 1 7/8 HEIGH, UNEMBOSSED NECKRING PART NUMBER, (4004).
2. CAP - IF SPECIFIED ON WORK ORDER, 3 1/8-11 NS THREAD PART NUMBER, (820-0001F).
3. TEST REPORTS AND SPECIFICATIONS REQUIRED WITH SHIPMENT.

**CONFIDENTIAL
DO NOT DUPLICATE**

**NON-CONTROLLED DOCUMENT
QA/PC DEPARTMENT
REFERENCE ONLY**

1	REV. LOGO	DLH	10/18/10
REV	DESCRIPTION	BY	DATE
UNITS INCHES (mm)		HUNTSVILLE FACILITY 521 GREEN COVE ROAD HUNTSVILLE, AL 35803 USA	
TOLERANCES (EXCEPT NOTED)			
DECIMAL ± .01	TITLE	150 FT ³ BILLET PIERCED CYLINDER	
ANGULAR ± 1 DEG	DATE	DRAWING NUMBER	
	11/9/09	3740746-00	

DRWN.	D. HARRIS
CHKD.	<i>[Signature]</i> 10/18/10
APPD.	<i>[Signature]</i> 10/18/10
SCALE	NONE