

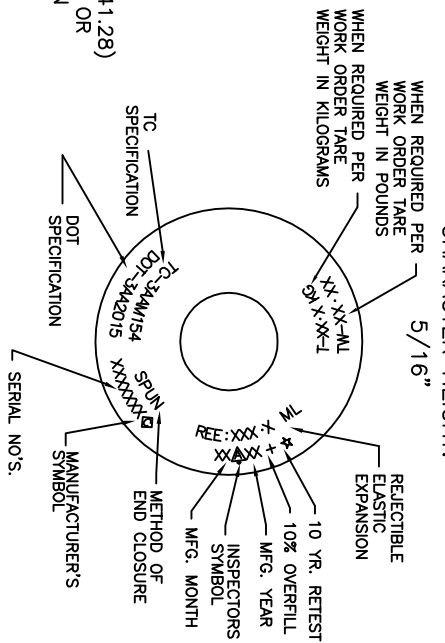
SPECIFICATION	DOT-3AA	TC-3AAM
WEIGHT	27 LBS NOM	12.2 KG NOM
VOLUME	500 CU IN NOM	8.1 L NOM
SERVICE PRESSURE	2,015 PSIG	154 BAR
TEST PRESSURE	3,360 PSIG	23.16 MPA

- MATERIAL: A519 4130
- INTERNAL CLEANING: ALKALINE-STEAM-NITROGEN PURGE
- EXTERNAL FINISH: SHOTBLAST PAINT PER WORK ORDER
- PACKAGING: PLUG INLET WITH 3/4" NPT PLUG (5743) RUBBER BAND / PALLETIZE / STRETCH WRAP

- NOTES:
1. NECKRING - IF SPECIFIED ON WORK ORDER, 3 1/8-11 NS CAP THREAD X 1 5/8 BORE X 1 7/8 HEIGH, UNEMBOSSED NECKRING PART NUMBER, (4004).
 2. CAP - IF SPECIFIED ON WORK ORDER, 3 1/8-11 NS THREAD PART NUMBER, (820-0001F).

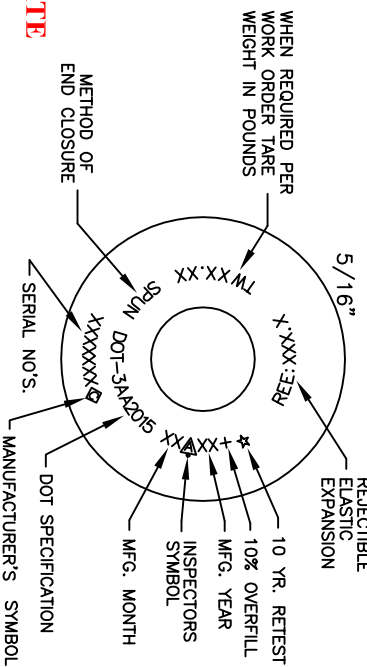
DOT/TC STAMPING LAYOUT

(NOT TO SCALE)
CHARACTER HEIGHT: 5/16"



DOT STAMPING LAYOUT

(NOT TO SCALE)
CHARACTER HEIGHT: 5/16"



CONFIDENTIAL
DO NOT DUPLICATE
NON-CONTROLLED DOCUMENT
QA/PC DEPARTMENT
REFERENCE ONLY

DRWN.	D. HARRIS	DATE	11/3/10	DRAWING NUMBER	2740718-15
CHD.	1/6/11	TITLE	40 FT ³ SPUN (BILLET TUBE) CYLINDER		
APPD.	1/6/11	DESCRIPTION			
SCALE	NONE	UNITS	INCHES (MM)	DLH	1/6/11
		TOLERANCES (DECIMAL)	± .01	BY	DATE
		ANGULAR	± 1 DEG		
		HUNTSVILLE FACILITY <small>527 GREEN OAK ROAD HUNTSVILLE, AL 35893 USA</small>			