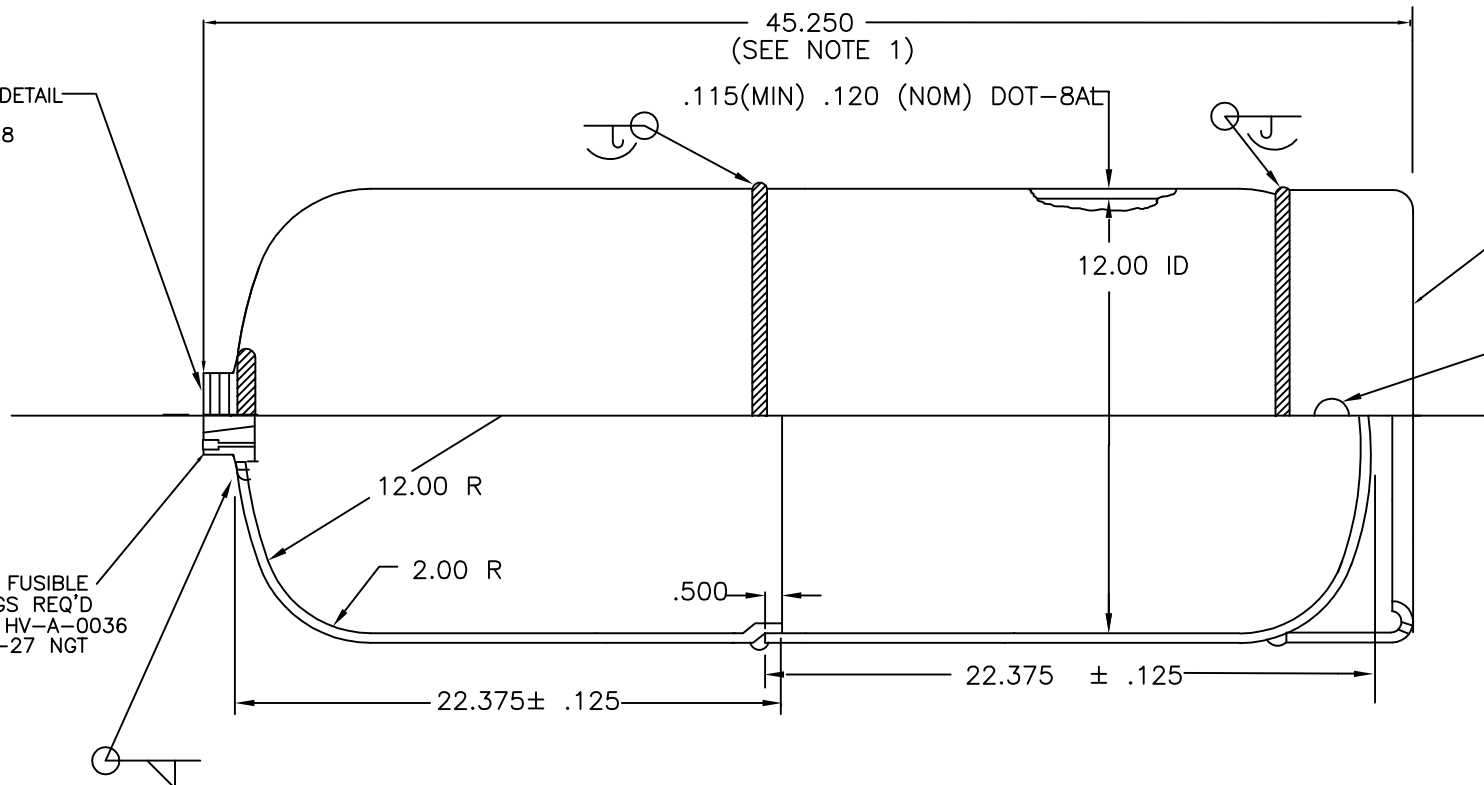


FLANGE - FOR DETAIL  
SEE HV-A-0081  
MATERIAL: C 1018

TWO FUSIBLE  
PLUGS REQ'D  
SEE HV-A-0036  
1/8-27 NGT

FOOTRING - FOR DETAIL  
SEE HV-A-0013  
MATERIAL: C 1010 CQ

1/2 DIA (2) PLS.  
180 DEG APART



**CONFIDENTIAL  
DO NOT DUPLICATE**

**NON-CONTROLLED DOCUMENT  
QA/PC DEPARTMENT  
REFERENCE ONLY**

**SPECIFICATIONS**

	DOT-8AL
CYL WATER CAP (MIN) (MAX)	168.5 LBS 4680 CUIN 172.5 LBS 4790 CUIN
CYL SHELL WT (AVE)	80.0 LBS
WORKING PRESSURE	250 PSI
TEST PRESSURE	500 - 600 PSI
HYDROTEST PRESSURE	750 PSI
AVG. YIELD STRENGTH	50000 PSI
MIN. TENSILE STRENGTH	68202 PSI
MAX CYL WALL STRESS	35000 PSI
ACT. CYL WALL STRESS	34101 PSI
MATERIAL	MOD 1015

**NOTES:**

1. THIS DIMENSION IS APPROXIMATE, CONTROL PARAMETER IS WATER CAPACITY.
2. ALL DIMENSIONS AND SPECIFICATIONS ARE NOMINAL UNLESS OTHERWISE SPECIFIED.
3. VALVE HAS BEEN OMITTED FOR CLARITY.
4. UNITS ARE INCHES.

2	REV. LOGO	DLH	8/31/10
REV	DESCRIPTION	BY	DATE
UNITS INCHES (mm)		HUNTSVILLE FACILITY 521 GREEN COVE ROAD HUNTSVILLE, AL 35803 USA	
TOLERANCES (EXCEPT NOTED)		TITLE	W-450 TWO-PIECE ACETYLENE CYLINDER
DECIMAL ± .01	ANGULAR ± 1 DEG	DATE	DRAWING NUMBER
NONE		4/24/00	HV-C-1450

DRWN. D. HARRIS  
CHKD. DLH 8/31/10  
APPD. JW 8/31/10  
SCALE NONE